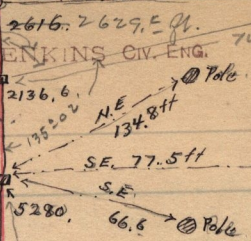


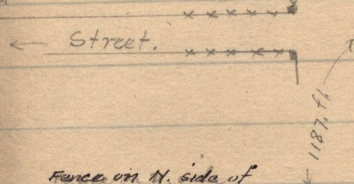
N. line S/W  
 centre of Co. Road  
 Run S.W. to Washington  
 View  
 44° 53'  
 2616.2629, E. Pl.  
 Sec. 7, T. 7. N. R. 1. W  
 old cor.  
 See J. 90  
 (51)

end of 2nd mile



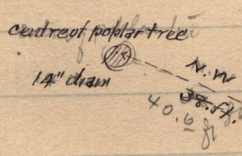
Shupe  
 Blacksmith  
 Shop  
 in North Ogden

Gideon Alvord.

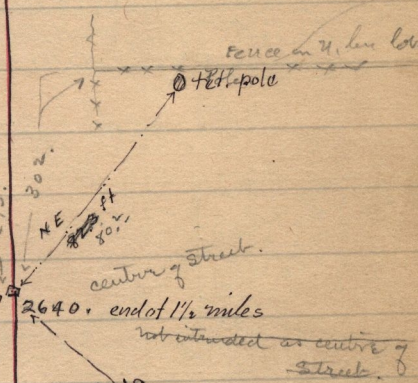


Co. Mont. N. 14? in Street runs W. near  
 Gideon Alvord's in  
 North Ogden.  
 4300.

Fence on N. side of  
 J. M. Montgomery's  
 Lot in North Ogden  
 on N. line L. 87 54.



Locust tree  
 14" diam.  
 South of J. M. Montgomery's  
 entrance to Barn yard,  
 on N. side of Mound.



2640. end of 1 1/2 miles  
 not intended as centre of  
 street.

5 mile Cr. W  
 1950.

(cold water?)

along near centre of Washington Ave.

street to John  
 Barkers

